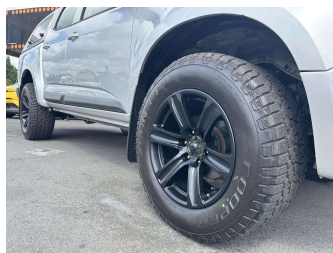


2016 Holden COLORADO LT DC PU 2.8D/4WD/6A




Purchase Price **\$33,995**

Includes GST, Registration & Licensing Note: A Clean Car fee/rebate does not apply to this vehicle


Indicative repayments

\$216.67 per week*

Based on a 48 month term & no deposit.
Total repayments (208) = \$45,066.97



Gain peace of mind with Mechanical Breakdown Insurance. **Ask us how.**



Top features

- » 2 keys
- » 4 Wheel Drive
- » Air Conditioning
- » Alloys
- » Audio Control
- » Bluetooth
- » Bluetooth
- » Canopy
- » Central Locking
- » Central Locking
- » Cruise Control
- » Cruise Control
- » Digital Display
- » Electric Mirrors
- » Factory Tint
- » Fog lamps
- » Immobiliser
- » NZ New

Body Style
4 door, Ute

Odometer
134,254 km

Engine
2776 cc, Internal Combustion

Fuel Type
Diesel


Transmission
Automatic

Wheels
-

VIN
MMU148FK0GH619284

Interior
Black/Grey, Cloth

Safety



Based on 2023 UCSR rating for 12-20 models

Reg No.
JPL8

Ext Colour
Silver

History
NZ New

Seats
5 seats

CO2 Emissions
★☆☆☆☆
274 grams/km

Energy Economy
★☆☆☆☆
Annual fuel cost of \$3,950
10.3L per 100km

Cost per year is an estimate based on diesel price of \$2.00 per litre and an average distance of 14000 km includes Road User Charges. Emissions and Energy Economy figures standardised to 3P WLTP.

Stock ID: 18756

* Te Rapa Wholesale Cars is not a lender nor a financial adviser. Any amounts displayed should not be seen as an offer of finance or taken as financial advice. The interest rate, fees and loan term used in this calculation may not actually represent those available from lenders. Actual interest rates, fees and loan terms will vary per lender and are typically based on an assessment of your credit risk and responsible lending criteria. Any repayment amounts displayed are indicative only and have been calculated using several other indicative inputs. The interest rate used in this calculation is an arbitrary 13.95%, however exact interest rates vary per lender. The term of the loan used in this calculation is 48 month. Exact terms available vary per lender although options typically include 6, 12, 18, 24, 36, 48 and 60 months. This calculation also includes a typical mandatory fee charged by lenders. This is a one-off establishment fee of \$395.00. Typically, this fee can be paid upfront or, as in this calculation, be capitalised over the contract term, ie. included in the loan amount. This fee can vary per lender and other non-mandatory fees and charges may also apply. The total amount of repayments has been calculated by multiplying 208 weekly repayments (based on a 48 month term) by the weekly repayment amount of \$216.67 which equals \$45,066.97. This calculator does not consider any of your own personal circumstances and we strongly suggest you seek budgeting advice prior to committing to any loan contract. Responsible lending criteria and lender terms and conditions will likely apply to any finalised loan contract. Proof of security and/or vehicle insurance may also be required before proceeding.

Generated 18 January 2024 18:32