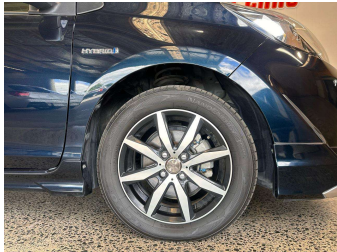
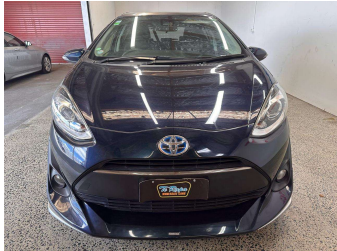


2018 Toyota AQUA HYBRID



Purchase Price

\$15,995

Includes GST, Registration & Licensing

Indicative repayments

\$103.26 per week*

Based on a 48 month term & no deposit.
Total repayments (208) = \$21,478.56

MARAC

Gain peace of mind with
Mechanical Breakdown
Insurance. **Ask us how.**

JANSSEN
INSURANCE

Top features

» Air Conditioning

» Alloys

» Audio Control

» Body Kit (Factory)

» Central Locking

» Central Locking

» Digital Display

» Electric Mirrors

» Factory Tint

» Fog Lights

» Hybrid

» Lane Assist

» Monsoons

» Power Steering

» Push Start

» Rear Wiper

» Remote locking

» Reverse Camera

Body Style
5 door, Hatchback

Odometer
90,643 km

Engine
1496 cc, Hybrid

Fuel Type
Petrol

Transmission
Automatic

Wheels
-

VIN
7AT0H65YX25648168

Interior
Black, Cloth

Safety



Based on 2025 UCSR rating
for 12-20 models

Reg No.
-

Ext Colour
Blue

History
-

Seats
5 seats

CO2 Emissions
★★★★★☆☆
90 grams/km

Energy Economy
★★★★☆☆

Annual fuel cost of \$1,490
3.8L per 100km

Cost per year is an estimate based
on petrol price of \$2.80 per litre and
an average distance of 14000 km.
Emissions and Energy Economy
figures standardised to 3P WLTP.

Stock ID: 20857



Te Rapa Wholesale Cars | Phone 07 846 9429 | Email sales@terapacars.co.nz
35 Greenwood Street, Frankton, Hamilton, New Zealand
www.terapacars.co.nz

★★★★★
4.70 | 1108 reviews

* Te Rapa Wholesale Cars is not a lender nor a financial adviser. Any amounts displayed should not be seen as an offer of finance or taken as financial advice. The interest rate, fees and loan term used in this calculation may not actually represent those available from lenders. Actual interest rates, fees and loan terms will vary per lender and are typically based on an assessment of your credit risk and responsible lending criteria. Any repayment amounts displayed are indicative only and have been calculated using several other indicative inputs. The interest rate used in this calculation is an arbitrary 13.95%, however exact interest rates vary per lender. The term of the loan used in this calculation is 48 month. Exact terms available vary per lender although options typically include 6, 12, 18, 24, 36, 48 and 60 months. This calculation also includes a typical mandatory fee charged by lenders. This is a one-off establishment fee of \$395.00. Typically, this fee can be paid upfront or, as in this calculation, be capitalised over the contract term, ie. included in the loan amount. This fee can vary per lender and other non-mandatory fees and charges may also apply. The total amount of repayments has been calculated by multiplying 208 weekly repayments (based on a 48 month term) by the weekly repayment amount of \$103.26 which equals \$21,478.56. This calculator does not consider any of your own personal circumstances and we strongly suggest you seek budgeting advice prior to committing to any loan contract. Responsible lending criteria and lender terms and conditions will likely apply to any finalised loan contract. Proof of security and/or vehicle insurance may also be required before proceeding.

Vehicle data updated 15 December 2025 10:29