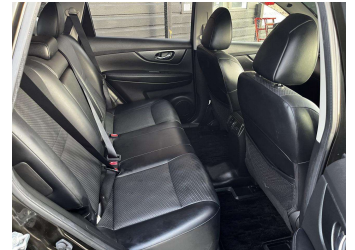
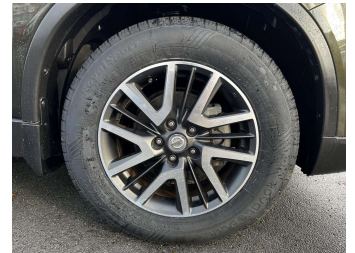


2014 Nissan X-Trail 20X Extremer-X Emergency




Purchase Price **\$17,995**
Includes GST, Registration & Licensing

Indicative repayments
\$115.86 per week* **MARAC**
Based on a 48 month term & no deposit.
Total repayments (208) = **\$24,099.49**

Gain peace of mind with Mechanical Breakdown Insurance. **Ask us how.** **JANSSEN INSURANCE**


Top features

- » ABS Braking
- » ABS Braking
- » Air Con
- » Air Conditioning
- » Alloys
- » ASC
- » Cruise Control
- » ECO MODE
- » Electric Mirrors
- » ESC
- » Fog Lights
- » Heated Seats
- » Heated Seats
- » I-Stop
- » Lane Assist
- » Push Start
- » Radio/CD
- » Rear Wiper

Body Style	5 door, SUV	Reg No.	-
Odometer	90,098 km	Ext Colour	Green
Engine	2000 cc	History	-
Fuel Type	Petrol	Seats	5 seats, Black Leather Seats
Transmission	Automatic, 4WD	CO2 Emissions	★★★★☆
Wheels	Factory Alloys	165 grams/km	
VIN	7AT0DH6LX24033263	Energy Economy	★★★☆☆☆
Interior	Black, Cloth	Annual fuel cost of \$2,780	
Safety		7.1L per 100km	
	Based on 2023 UCSR rating for 14-21 models	Cost per year is an estimate based on petrol price of \$2.80 per litre and an average distance of 14000 km. Emissions and Energy Economy figures standardised to 3P WLTP.	
		Stock ID: 19201	



Te Rapa Wholesale Cars | Phone 07 282 1812 | Email sales@terapacars.co.nz
Greenwood Street, Frankton, Hamilton 3204, New Zealand
www.terapacars.co.nz

 ★★★★★
4.66 | 769 reviews

* Te Rapa Wholesale Cars is not a lender nor a financial adviser. Any amounts displayed should not be seen as an offer of finance or taken as financial advice. The interest rate, fees and loan term used in this calculation may not actually represent those available from lenders. Actual interest rates, fees and loan terms will vary per lender and are typically based on an assessment of your credit risk and responsible lending criteria. Any repayment amounts displayed are indicative only and have been calculated using several other indicative inputs. The interest rate used in this calculation is an arbitrary 13.95%, however exact interest rates vary per lender. The term of the loan used in this calculation is 48 month. Exact terms available vary per lender although options typically include 6, 12, 18, 24, 36, 48 and 60 months. This calculation also includes a typical mandatory fee charged by lenders. This is a one-off establishment fee of \$395.00. Typically, this fee can be paid upfront or, as in this calculation, be capitalised over the contract term, ie. included in the loan amount. This fee can vary per lender and other non-mandatory fees and charges may also apply. The total amount of repayments has been calculated by multiplying 208 weekly repayments (based on a 48 month term) by the weekly repayment amount of \$115.86 which equals \$24,099.49. This calculator does not consider any of your own personal circumstances and we strongly suggest you seek budgeting advice prior to committing to any loan contract. Responsible lending criteria and lender terms and conditions will likely apply to any finalised loan contract. Proof of security and/or vehicle insurance may also be required before proceeding.