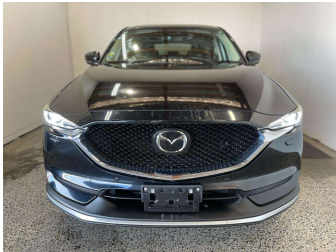


# 2017 Mazda CX-5 25S



Purchase Price

\$28,995

Includes GST, Registration & Licensing

Indicative repayments

\$185.17 per week\*

Based on a 48 month term & no deposit.  
Total repayments (208) = \$38,514.63

MARAC

Gain peace of mind with  
Mechanical Breakdown  
Insurance. Ask us how.

JANSSEN  
INSURANCE

Top features

» Air Con

» Air Conditioning

» Alloys

» Cruise Control

» Cruise Control

» Heated Seats

» heated steering wheel

» I-Stop

» Lane Assist

» Navigation

» Parking Sensors

» Push Start

» Radio

» Radio/CD

» Rear Wiper

» Reverse Camera

» Reverse Camera

» Reversing Camera

Body Style

5 door, SUV

Odometer

44,504 km

Engine

2500 cc

Fuel Type

Petrol

Transmission

Automatic

Wheels

Factory Alloys

VIN

7AT0C144X25101248

Interior

Black, Cloth

Safety

5 star

safety rating

Based on 2024 UCSR rating  
for 17-22 models

Reg No.

-

Ext Colour

Black

History

-

Seats

5 seats, Cloth

CO2 Emissions

★★★★★☆☆

179 grams/km

Energy Economy

★★★★☆☆☆☆

Annual fuel cost of \$2,980

7.6L per 100km

Cost per year is an estimate based  
on petrol price of \$2.80 per litre and  
an average distance of 14000 km.  
Emissions and Energy Economy  
figures standardised to 3P WLTP.

Stock ID: 20543

\* Te Rapa Wholesale Cars is not a lender nor a financial adviser. Any amounts displayed should not be seen as an offer of finance or taken as financial advice. The interest rate, fees and loan term used in this calculation may not actually represent those available from lenders. Actual interest rates, fees and loan terms will vary per lender and are typically based on an assessment of your credit risk and responsible lending criteria. Any repayment amounts displayed are indicative only and have been calculated using several other indicative inputs. The interest rate used in this calculation is an arbitrary 13.95%, however exact interest rates vary per lender. The term of the loan used in this calculation is 48 month. Exact terms available vary per lender although options typically include 6, 12, 18, 24, 36, 48 and 60 months. This calculation also includes a typical mandatory fee charged by lenders. This is a one-off establishment fee of \$395.00. Typically, this fee can be paid upfront or, as in this calculation, be capitalised over the contract term, ie. included in the loan amount. This fee can vary per lender and other non-mandatory fees and charges may also apply. The total amount of repayments has been calculated by multiplying 208 weekly repayments (based on a 48 month term) by the weekly repayment amount of \$185.17 which equals \$38,514.63. This calculator does not consider any of your own personal circumstances and we strongly suggest you seek budgeting advice prior to committing to any loan contract. Responsible lending criteria and lender terms and conditions will likely apply to any finalised loan contract. Proof of security and/or vehicle insurance may also be required before proceeding.