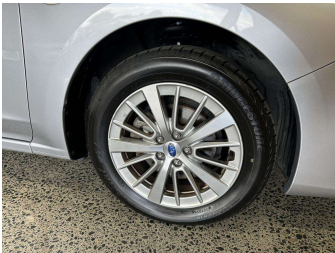


2017 Subaru Impreza 1.6I-L



Purchase Price

\$16,995

Includes GST, Registration & Licensing

Indicative repayments

\$109.56

per week*

MARAC

Based on a 48 month term & no deposit.
Total repayments (208) = \$22,789.03

Gain peace of mind with
Mechanical Breakdown
Insurance. **Ask us how.**

JANSSEN
INSURANCE

Top features

» Air Con

» Air Conditioning

» Alloys

» Cruise Control

» Cruise Control

» Fog lamps

» Lane Assist

» Paddle Shift

» Paddle Shift

» Rear Wiper

» Steering Wheel Contorl...

» Traction Control

Body Style
5 door, Station Wagon

Odometer
90,814 km

Engine
1600 cc

Fuel Type
Petrol

Transmission
Automatic

Wheels
16", Factory Alloys

VIN
7AT0GF09X23003907

Interior
Black, Cloth

Safety



Based on 2023 UCSR rating
for 16-21 models

Reg No.
-

Ext Colour
Silver

History
-

Seats
5 seats, Cloth

CO2 Emissions
★★★★☆
149 grams/km

Energy Economy
★★★★☆☆

**Annual fuel cost of \$2,510
6.4L per 100km**

Cost per year is an estimate based
on petrol price of \$2.80 per litre and
an average distance of 14000 km.
Emissions and Energy Economy
figures standardised to 3P WLTP.

Stock ID: 19029



Te Rapa Wholesale Cars | Phone 07 846 9429 | Email sales@terapacars.co.nz
35 Greenwood Street, Frankton, Hamilton, New Zealand
www.terapacars.co.nz

★★★★★

4.66 | 769 reviews

* Te Rapa Wholesale Cars is not a lender nor a financial adviser. Any amounts displayed should not be seen as an offer of finance or taken as financial advice. The interest rate, fees and loan term used in this calculation may not actually represent those available from lenders. Actual interest rates, fees and loan terms will vary per lender and are typically based on an assessment of your credit risk and responsible lending criteria. Any repayment amounts displayed are indicative only and have been calculated using several other indicative inputs. The interest rate used in this calculation is an arbitrary 13.95%, however exact interest rates vary per lender. The term of the loan used in this calculation is 48 month. Exact terms available vary per lender although options typically include 6, 12, 18, 24, 36, 48 and 60 months. This calculation also includes a typical mandatory fee charged by lenders. This is a one-off establishment fee of \$395.00. Typically, this fee can be paid upfront or, as in this calculation, be capitalised over the contract term, ie. included in the loan amount. This fee can vary per lender and other non-mandatory fees and charges may also apply. The total amount of repayments has been calculated by multiplying 208 weekly repayments (based on a 48 month term) by the weekly repayment amount of \$109.56 which equals \$22,789.03. This calculator does not consider any of your own personal circumstances and we strongly suggest you seek budgeting advice prior to committing to any loan contract. Responsible lending criteria and lender terms and conditions will likely apply to any finalised loan contract. Proof of security and/or vehicle insurance may also be required before proceeding.

Generated 16 May 2024 12:55